

# Masterplan

55%  
open  
space

124 houses  
SPREAD ACROSS  
7 acres

94 | row houses  
18 | villaments  
12 | apartment  
units



## LEGEND

- 1 Entry / Exit
- 2 Indoor badminton court and Multi-purpose hall
- 3 Gymnasium
- 4 Swimming pool
- 5 Community table
- 6 Half basketball court
- 7 Interactive play area
- 8 Beach volleyball court
- 9 Seating alcove
- 10 Wellness garden
- 11 Tot lot
- 12 Studio apartments
- 13 Villaments
- 14 Focal pavilion
- 15 Party lawn





	1 BHK	1 RK	2 BHK
Neral Sector 1	JBC	LBS	HB
	LBS	MB 1	JBC
	MB 1		
Neral Sector 2	1 BHK	1 RK	2 BHK
	JB 1	LB 1	HBC 1
	JB 2		HBC 2
	KB		JB 1
	LB 1		JB 2
	PB 1		KB
Neral Sector 3	1 BHK	1 RK	2 BHK
	JAC	LB 1	GBC
	JB	LB 2	HB 1
	LB 1	LB 3	JAC
	LB 2		JB
	LB 3		
	PB		
Neral Sector 4A	1 BHK	1 RK	2 BHK
	JB 2		GB
	PB 2		HB 3
	PBC		JB 2











VP-1 VP-2 VP-3







18 MT WIDE ROAD AND CLUBHOUSE

Type C	
Sq. meter	Sq. feet
40.631	437.35

Type G	
Sq. meter	Sq. feet
45.631	491.17

Type G	
Sq. meter	Sq. feet
45.665	491.54

PB 2 BUILDING



HBC 1 BUILDING

Type C	
Sq. meter	Sq. feet
40.597	436.99

Type G	
Sq. meter	Sq. feet
45.564	490.45

Type G	
Sq. meter	Sq. feet
45.631	491.17

LB 1 BUILDING



- All dimensions mentioned in the plans are from unfinished surfaces.
- Furniture mentioned in the plans are for better understanding. It is not included in flat amenities.

MahaRERA Reg. No.: Sector 1: P52000017996, Sector 2: P52000017954, Sector 3: P52000017953, Sector 4 A: P52000017994  
Project details are available at website: <http://maharera.mahaonline.gov.in>





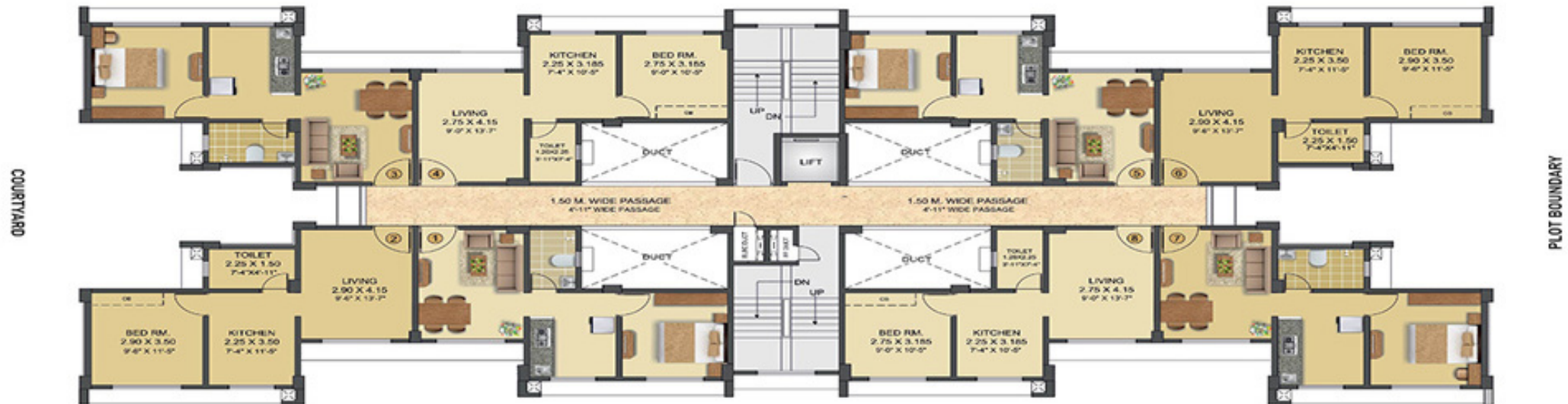
INTERNAL ROAD

Type E	
Sq. meter	Sq. feet
34.233	368.48

Type B	
Sq. meter	Sq. feet
30.610	329.49

Type B	
Sq. meter	Sq. feet
30.610	329.49

Type E	
Sq. meter	Sq. feet
34.233	368.48



Type E	
Sq. meter	Sq. feet
34.233	368.48

Type B	
Sq. meter	Sq. feet
30.620	329.59

Type B	
Sq. meter	Sq. feet
30.620	329.59

Type E	
Sq. meter	Sq. feet
34.233	368.48

HB3 & GB BUILDING



- All dimensions mentioned in the plans are from unfinished surfaces.
- Furniture mentioned in the plans are for better understanding. It is not included in flat amenities.

MahaRERA Reg. No.: Sector 1: P52000017996, Sector 2: P52000017954, Sector 3: P52000017953, Sector 4 A: P52000017994  
Project details are available at website: <http://maharera.mahaonline.gov.in>

